

CROSSTREES HOUSE

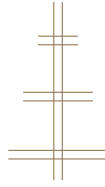
14 SANDYFORD PLACE • GLASGOW

TOWNHOUSE OFFICE SPACE
TO LET IN GLASGOW



WWW.CROSSTREES.HOUSE





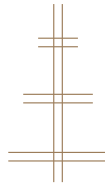
CROSSTREES HOUSE

14 SANDYFORD PLACE · GLASGOW

A mid-terraced building comprising of 3 spacious and classically elegant floors, **CROSSTREES HOUSE** provides all the luxury resources for impeccable services to each office.

With a total of 10 principal rooms, 3 bathrooms, and a large sumptuous boardroom, the townhouse carefully retains the finest features of the original carved walnut panelling and high ceilings.





CROSSTREES HOUSE

14 SANDYFORD PLACE · GLASGOW

LET THE WHOLE TOWNHOUSE

CURRENT OPTION TO
LET THE **COMPLETE**
TOWNHOUSE

RENTAL TERMS
ON ENQUIRY

FOR ALL THREE FLOORS

INTERNALLY, THE OFFICES
BENEFIT FROM:

- Carpeted and wooden floors
- Decorative cornice work
- A wet radiator system
- WC facilities on all floors
- Tea preparation areas on the upper, ground and lower ground floors

THE COMMON OFFICE AREAS
BENEFIT FROM:

- 6 CAR PARK SPACES
- Stone and timber flooring within the main entrance lobby
- Carpeted staircase and landings with oak border
- Integrated flush lighting and an antique wrought iron handrail feature



ENQUIRE ABOUT LETTING THE WHOLE OFFICE [HERE...](#)



CROSSTREES HOUSE

14 SANDYFORD PLACE · GLASGOW

LOWER GROUND FLOOR

THE LOWER GROUND FLOOR SPECIFICATION:

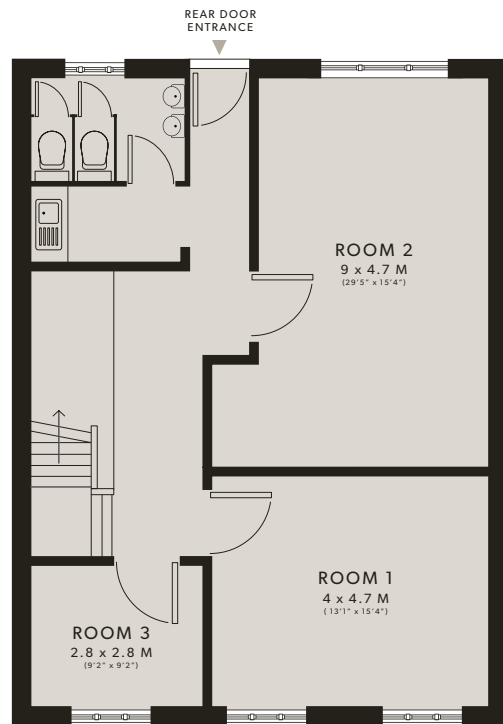
- 3 Main Offices & 1 WC Facility
- 2 Storage Cupboards
- Approx. Area: 612 SQ. F. / 57 SQ. M.
- Approx. Storage: 28 SQ. F. / 2.6 SQ. M.

RENTAL TERMS ON ENQUIRY

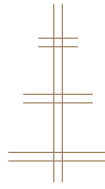
FOR THE ENTIRE FLOOR



THE LOWER GROUND FLOORPLAN



ENQUIRE ABOUT LETTING THIS FLOOR [HERE...](#)



CROSSTREES HOUSE

14 SANDYFORD PLACE · GLASGOW

GROUND FLOOR

THE GROUND FLOOR SPECIFICATION:

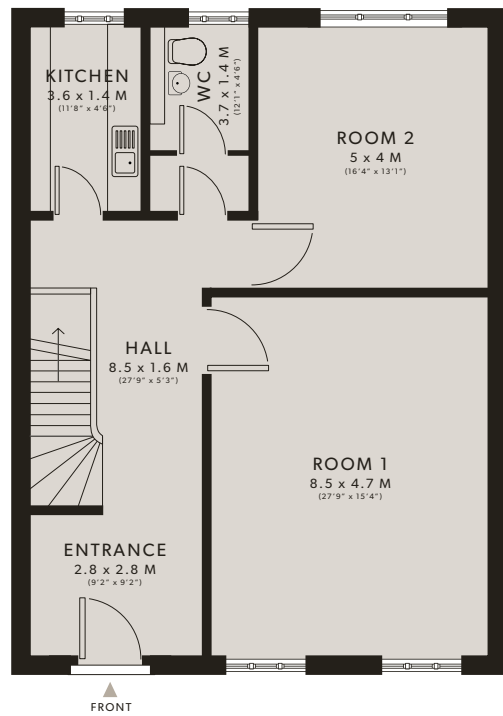
- 1 Main Office & 2 Storage Cupboards
- 1 Boardroom
- Kitchen & Bathroom, plus Cloakroom
- Approx. Area: 591 SQ. F. / 55 SQ. M.
- Approx. Storage: 5 SQ. F. / 0.5 SQ. M.

RENTAL TERMS ON ENQUIRY

FOR THE ENTIRE FLOOR



THE GROUND FLOORPLAN



ENQUIRE ABOUT LETTING THIS FLOOR **HERE...**



CROSSTREES HOUSE

14 SANDYFORD PLACE - GLASGOW

UPPER FLOOR

THE UPPER FLOOR SPECIFICATION:

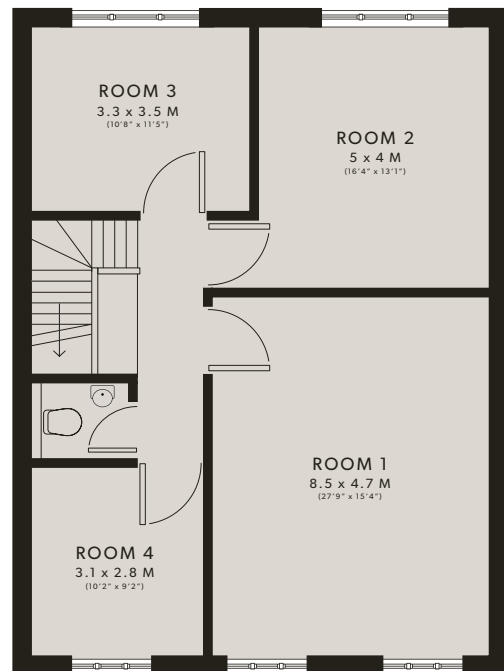
- 4 Main Offices & 1 WC Facility
- 2 Storage Cupboards
- Approx. Area: 829 SQ. F. / 77 SQ. M.
- Approx. Storage: 3 SQ. F. / 0.3 SQ. M.

RENTAL TERMS ON ENQUIRY

FOR THE ENTIRE FLOOR



THE UPPER FLOORPLAN



ENQUIRE ABOUT LETTING THIS FLOOR [HERE...](#)





CROSSTREES HOUSE

14 SANDYFORD PLACE • GLASGOW

CROSSTREES HOUSE FOR THEMSELVES AND FOR VENDORS OR LESSORS OF THIS PROPERTY WHOSE AGENTS THEY ARE GIVE NOTICE THAT:

(I) THE PARTICULARS ARE SET OUT AS A GENERAL OUTLINE ONLY FOR THE GUIDANCE OF INTENDED LESSEES, AND DO NOT CONSTITUTE, NOR CONSTITUTE ANY PART OF, AN OFFER OF CONTRACT;

(II) ALL DESCRIPTIONS, DIMENSIONS, REFERENCE TO CONDITION AND NECESSARY PERMISSIONS FOR USE AND OCCUPATION, AND OTHER DETAILS ARE GIVEN WITHOUT RESPONSIBILITY AND ANY INTENDING TENANTS SHOULD NOT RELY ON THEM AS STATEMENTS OR REPRESENTATIONS OF FACT BUT MUST SATISFY THEMSELVES BY INSPECTION OR OTHERWISE AS TO THE CORRECTNESS OF EACH OF THEM;

(III) NO PERSON IN THE EMPLOYMENT OF CROSSTREES HOUSE HAS ANY AUTHORITY TO MAKE OR GIVE ANY REPRESENTATION OR WARRANTY WHATEVER IN RELATION TO THIS PROPERTY.

(IV) WE BELIEVE THE DETAILS CONTAINED HEREIN TO BE CORRECT, HOWEVER THEIR ACCURACY IS NOT GUARANTEED AND THEY DO NOT FORM ANY PART OF A CONTRACT. PHOTOGRAPHS AND FLOORPLANS ARE PRODUCED FOR GENERAL INFORMATION AND GUIDANCE. IT MUST NOT BE INFERRED THAT ANY OF THE ITEM(S) / DIMENSIONS DISPLAYED ARE CORRECT, OR ARE CONFIRMED AN BEING INCLUDED WITH THE PROPERTY.

DESIGN BY **TALISMAN.DESIGN**